



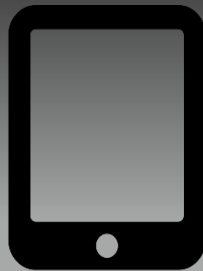
## Briercrest Christian Academy

510 College Drive

Caronport, Saskatchewan S0H 0S0

Telephone: (306)756-3303

### Remote Learning Opportunities...



If your child is unable to attend school, we will support them at home. Each of our classrooms has a Zoom video feed available

so that your child can attend class with all of their classmates virtually when they need to! All teachers will be using online materials for easy access on your child's device at home.

### Student Cohorts...

Schools are different from other public places because we get the same group of students every day. At our school,



student groups, or cohorts, will learn, play and eat together, and contact with other cohorts will be minimized. Recess and lunch schedules will look a bit different and student movement

around the school will be controlled to keep cohorts apart.

### Contact Tracing...

Our teachers and bus drivers will have seating plans so that we are able to quickly identify close contacts at school. Our log of essential visitors means we will know exactly who was in the school and when. Non-essential visitors and deliveries will not be allowed in the school.



### Help from Parents and Caregivers...

We need your help! Extra support from parents and caregivers will ensure a successful year for all students:

- ✓ Don't send your child(ren) on the bus unless you can't drive them that day.
- ✓ Arrange for your child(ren) to come home for lunch when this is possible.
- ✓ Reinforce the need for good hand hygiene at home.
- ✓ Don't send sick children to school.
- ✓ When the school asks you to pick up your child(ren), come immediately to pick them up.
- ✓ Make sure your child has a small bottle of hand sanitizer and a reusable mask (grades 4-12).
- ✓ Communicate with us by telephone, text or email rather than coming to the school.
- ✓ If your child(ren) are learning at home, help them when they need support.
- ✓ Let us know what we can do to support your child(ren) and your family!

Our school's plan for re-opening on September 8, 2020

We can't wait to be #learningtogether!

### Emotional Support...

Children will respond to the transition back to school in different ways, and each of our classrooms will have additional programming to support children who have been away from school since March. Let us know if your child is having a difficult transition back to school. We can help!

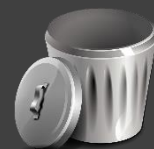


### Responding to Illness...

Children or staff who are sick will not be allowed at school until they have been symptom free for 48 hours or are confirmed to be COVID-19 negative. Our school has an isolation room and PPE available in the event that a child gets sick while at school. Through our Superintendent, we are working with the Saskatchewan Health Authority to ensure testing is available when needed.



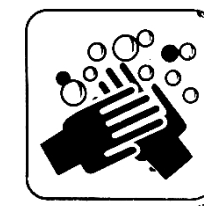
### Enhanced Cleaning...



Our facilities staff will be doing additional cleaning at our school. In addition to regular cleaning, we will be sanitizing all high touch areas at least twice daily. Every classroom has sanitizing supplies in place, and teachers will help students learn how to keep their individual spaces clean and safe. Materials that can't be cleaned regularly have been removed from our classrooms. Caretaking schedules will be adjusted to meet the needs of our school, and we have additional cleaning support available from Prairie South if we need it!

### Focus on Hygiene...

All of our washrooms with air dryers have had paper towel added so that students can practice safe hand washing. Every classroom has its own supply of hand sanitizer in addition to the personal bottles that students will bring, and our teachers will be implementing regular hand hygiene practices in every room. Hand hygiene before and after activities will ensure the safety of our students and staff.



## Prairie South Schools Mask Protocol 12 August 2020

Group	Mask Protocol
Grades PreK to 3 Students	Masks are not required. Parents may choose to provide masks for their children and school staff will support their use as practical during school hours.
Grades 4-12 Students	Masks are required during indoor transitions (hallways, bathroom visits, etc.) and on the school bus. Masks are required in classrooms where 15 or more staff and students are present.
Grades PreK to 3 Classroom Staff	Masks are not required in the classroom. Staff may choose to wear a mask. Masks are required during indoor transitions (hallways, bathroom visits, etc.)
Grades 4-12 Classroom Staff	Masks are required during indoor transitions (hallways, bathroom visits, etc.). Masks are required in classrooms where 15 or more staff and students are present.
Non-classroom staff and visitors to the school	Masks are required when students are present in common areas and during indoor transitions. Masks are required in classrooms when visiting multiple student cohorts. Staff may choose to mask at other times.

### Exemptions

1. In circumstances where students of any age require physical support, PPE (including masks) may be used at the discretion of the student support team planning for that student.
2. Students and staff with a medical condition that makes mask use inappropriate or unsafe are exempt from this protocol.

## BCA - Specific Details:

### Entrances & Exits:

- Students and staff can enter and exit BCA via the BCA main entrance (north side by gym).
- All parents of students and visitors to BCA, including delivery drivers, will need to enter the building via the main Briercrest entrance by the south parking lot.
- Visitors will be screened at the main Briercrest reception desk as per our Briercrest "[Return to Campus](#)" COVID-19 protocols. Guests of BCA are requested to then check in at the BCA office.
- Students, staff and visitors are required to sanitize their hands immediately after entering and just before exiting the main academic complex.

### Lockers:

- Lockers will be available upon specific request and will be assigned in a pattern that allows for physical distancing between locker assignments. Please connect directly with the BCA Office.
- Only school locks will be permitted.
- Students will not be allowed to use lockers unless they make a request and receive a specific assignment for their use throughout the school year.

### Masks for School Use:

- Masks must be worn when entering the school building.
- Dorm students are being asked to bring at least 7-10 masks with them to school; this will enable them to wear a fresh mask each day and to launder them between uses. Day students are encouraged to follow similar guidelines, ensuring that they can wear clean masks to school each day.
- Masks should incorporate at least two layers of material and should fit snugly over the face, ensuring that both the nose and mouth areas are covered appropriately. Bandanas are not considered to be sufficient.
- Information issued by the SK government about the use and construction of non-medical masks can be found [here](#).

### Briercrest "Return to Campus":

Please review the full BCA "[Return to Campus](#)" guide on our website. Here you will find a student guidebook, an FAQ section, a complete return to campus plan and links to our two webinars:  
 Return to Campus: High School Classes (from Thursday, August 6, 2020 @ 7:00 PM CST)  
 Return to Campus: High School Dorms (from Tuesday, August 13, 2020 @ 7:00 PM CST)

